



Press Information:

DDS-CAD now with Polysun Plug-In

Calculation of results and Inverter assignment directly from CAD software

Ascheberg/Winterthur, 15.09.2009 - **Software developers DATA Design System (DDS) and Vela Solaris have agreed a strategic partnership for the solar planning and design industry. This co-operation means the two firms combine the capability of their software products "DDS-CAD" and "Polysun".**

The combined solution will be presented for the first time at the exhibition "24th European Photovoltaic Solar Energy Conference" (European Union PVSEC) on 21st to 24th September in Hamburg at the joint stand B4G/6.

Particularly in the solar planning industry, are reliable, detailed and accurate predictions of requirements essential for a high performance software tool. Moreover, switching between separate programs should be avoided. Against this background, DDS and Vela Solaris have developed a solution integrating the full scope of Polysun as a plug-in to DDS-CAD, the new DDS-CAD Polysun Inside. This enhanced DDS-CAD tool has direct access to the Polysun software engine. Consequently this new development extends the functionality of DDS-CAD to manage the dynamic simulation of solar systems. A consistent, easily understood user interface ensures that the operation of the software with the new integrated physics simulation is effortless.

Previously, DDS-CAD offered the possibility, not only for the planning of all building services (MEP) disciplines, but also the layout, planning and representation of Photovoltaic and Solar Heating systems. Using still images and animation videos, the installation could be simulated, and of course the solar shading of adjacent objects. DDS GmbH Managing Director Nils Kverneland sees this new cooperation as a crucial step for the development of DDS-CAD: "The DDS product line was expanded with the involvement of Polysun plug-ins as a major new component. The partnership with Vela Solaris is an ideal fit with the philosophy of DDS. With the Polysun software interface, we integrate this exciting analysis tool's functionality in DDS-CAD, while maintaining our class leading user-friendly user interface. In conjunction with the new plug-in, DDS-CAD now has an



even more compelling selling point. This makes our software a more valuable planning tool for any solar energy professional."

Andreas Witzig, CEO of Vela Solaris sees that the direct integration of Polysun in DDS-CAD provides significant user benefits: "In addition to the Polysun standalone version, the new DDS plug-in of our simulation package is more important. The change between different tools can be avoided, thus the work efficiency increases and the risk of inconsistent simulation data is avoided."

The innovative idea to develop an interdisciplinary, database driven 3D design software for building design, which also integrates the relevant calculations, characterizes the DDS product from the beginning. The addition of the Polysun plug-in provides a consistent and timely extension of this approach. The user works entirely in DDS-CAD, is assisted by an extensive and up to date database of commercial components - for example in the solar field, the photovoltaic modules and inverters - are available. Created are not only the geometric dimensions but also - via Polysun Inside - the characteristic electrical parameters of the components. Instead of studying technical data sheets, the user can simulate the construction of the plant supported directly by the 3D planning tool, for example in the evaluation of the shadows. The inverter design is possible by pressing a button; the roof load is thus only the assessment of aesthetics for the operator.

- - - - -

Further Information DDS:

Nils Kverneland
Data Design System GmbH
An der Hansalinie 48 - 50
59387 Ascheberg

Tel: +49 (0) 2593 - 919 966
Fax: +49 (0) 2593 - 919 964
Internet: www.dds-cad.com
E-Mail: nk@dds-cad.com

Further Information Vela Solaris:

Andreas Witzig
Vela Solaris AG
Stadthausstrasse 125
CH-8400 Winterthur, Schweiz

Tel.: +41 55 220 71 00
E-Mail: andreas.witzig@velasolaris.com
Internet: www.velasolaris.com

Thank you for the publication and we request that you forward a sample copy

Dr. R. V. Schüler, GiVE 4 Public Relations

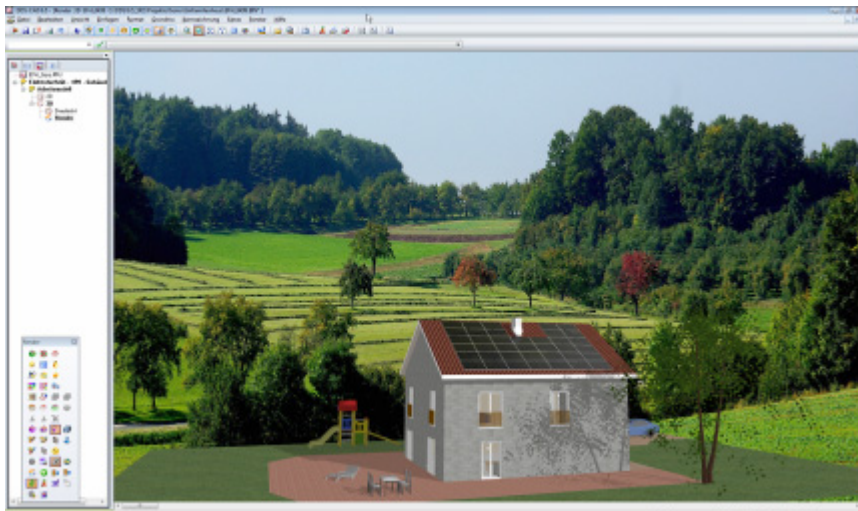
Von-Seeckt-Str. 57, 45130 Essen, Tel.0201-260554, Fax. 0201-260273
e-mail: dr.schueler@give4pr.de



About Data Design System: For more than 25 years the name Data Design System stands for precision, quality and inventor spirit. DDS was established in Norway in 1984 and is today one of the leading software companies in its target group, with more than 12.500 licences installed all over Europe. Planning offices, crafts enterprises, building management, industry and educational establishments are typical customers, who profit from over 20 years of development experience and security in an international enterprise with a solid financial platform. The DDS-CAD package, particularly for the planning of electrical installations, automation, sanitary and heating as well as climate, ventilation and energy simulation, offers individual, modular system solutions with an outstanding relation between price and performance. Renewable energies form a further priority for the company.

About Vela Solaris and Polysun: Vela Solaris is the leading provider of simulation software for decentralized energy systems. The application software developed by Vela Solaris Polysun is sold commercially since 1992 and supports energy planners and installers in analysis and design of solar systems and energy efficiency. Polysun was greatly expanded in recent years and covers the areas of solar thermal, photovoltaics, heat pumps, geothermal heat and cooling. Vela Solaris was founded in December 2006 as a spin-off of the Institute for Solar Technology SPF Rapperswil university and was honoured in November 2008 with the CTI start-up label. Vela Solaris works closely with leading universities and with industry to constantly expand the simulation models and to keep the component catalogues up to date.

Pictures:



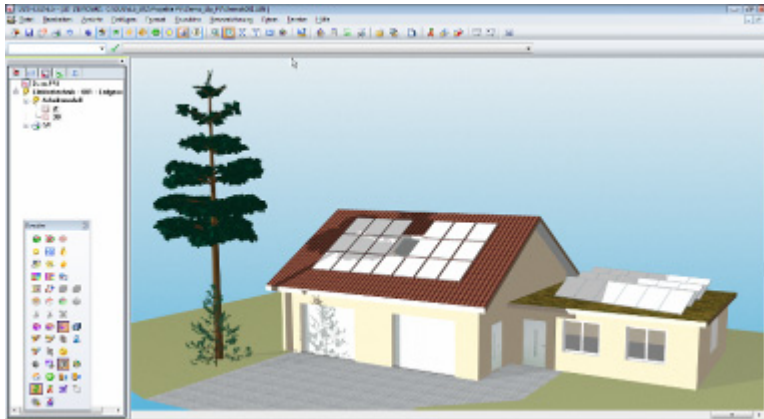
DDS-CAD Polysun Inside allows photorealistic rendering of the building including shading and time lapse solar analysis simulations.

Data Design System GmbH
At the Hansalinie 48-50
59387 Ascheberg, Germany
+49 2593 919 966
mailto:info@dds-cad.com
http://www.dds-cad.com

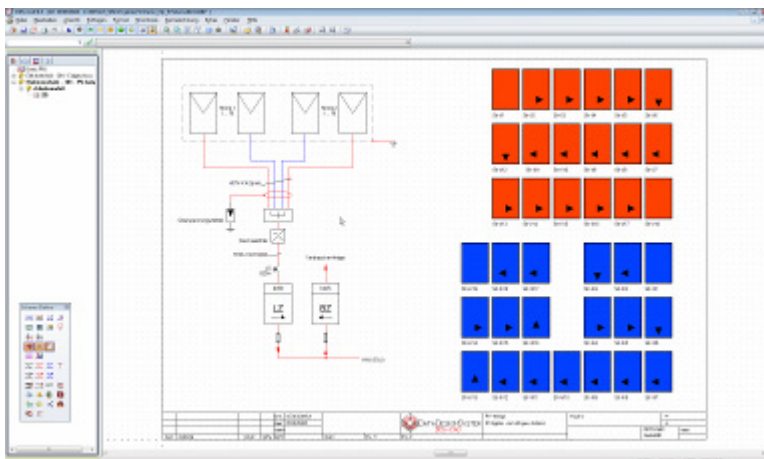


Vela Solaris AG
Stadthausstrasse 125
CH-8400 Winterthur, Schweiz
+41 55 220 71 00
mailto: info@velasolaris.com
http://www.velasolaris.com





In addition to the simulation as a single image, sun and shade can also be displayed as an animated film sequence.



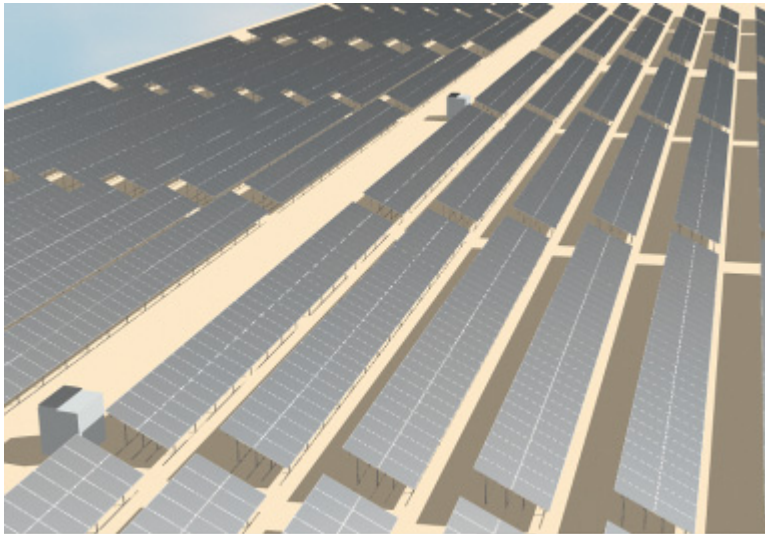
The software supports the creation of system layouts and schematics.

Data Design System GmbH
At the Hansalinie 48-50
59387 Ascheberg, Germany
+49 2593 919 966
mailto:info@dds-cad.com
http://www.dds-cad.com

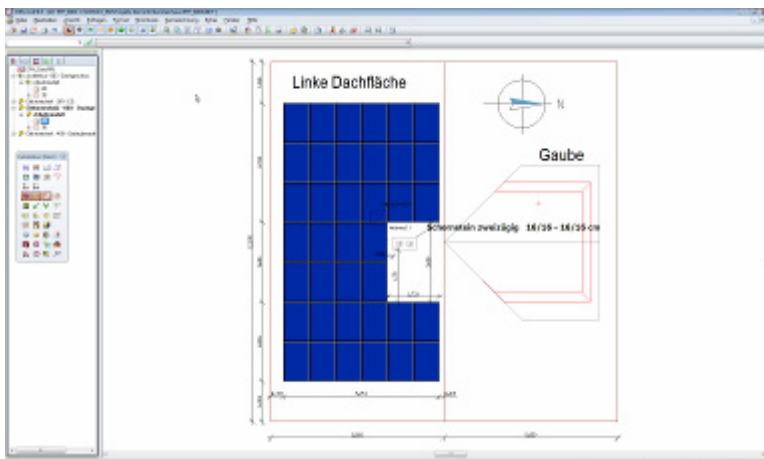


Vela Solaris AG
Stadthausstrasse 125
CH-8400 Winterthur, Schweiz
+41 55 220 71 00
mailto: info@velasolaris.com
http://www.velasolaris.com





In addition to the design of installations attached to buildings, the software also allows the design of plants in open spaces.



Also classic 2D views and plans can be created using the planning tool via a single mouse click.